

## Craigie Dam Bridge and Craigie Drawbridge – Boston/Cambridge, MA



**Year Built:** 1906 (Dam) 1910 (Drawbridge)

**Design:** Double leaf bascule lift

**Average Daily Traffic:** 45,000

**Project Type:** Deck and Substructure repairs and full replacement

**Contractor:** JF White, Framingham, MA

**Construction Cost:** \$42.8 M

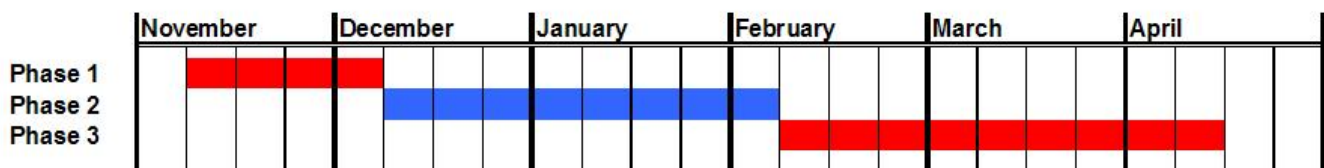
### Project Information

The Craigie Dam Bridge and Craigie Drawbridge carry McGrath O'Brien Highway (Route 28) between Land Blvd. in Cambridge and Leverett Circle in Boston. As part of the \$3 billion Patrick – Murray Accelerated Bridge Program, a construction contract was awarded to J. F. White of Framingham in June 2009 for the extensive structural rehabilitation of the Dam Bridge and the complete replacement of the Drawbridge. Work on the Craigie Dam Bridge was recently completed.

### Drawbridge Replacement Phases

Starting November 6, 2010 through April 2011, the contractor will start a 24/7 rapid replacement of the Craigie Drawbridge as required by USCG permit. The replacement will occur in 3 Phases:

1. Contractor will install temporary bridges over the existing bridge
2. Contractor will demolish the existing bridge and make repairs to the bridge substructure
3. Contractor will install a new pre-fabricated bridge



This work will be staged primarily from barges beneath the bridge and will use cranes at times to move the larger materials and prefabricated sections.

During Phase 1- initial installation of the temporary bridges and during Phase 3 - the final installation of the new prefabricated bridges, lane capacity will be reduced to two lanes of outbound traffic. During Phase 2 of the replacement, four lanes of traffic will be available (two in each direction).

## Vehicular Detours

During Phases 1 and 3 of the drawbridge replacement, the available lane capacity over the temporary bridge will be reduced to two travel lanes. These two lanes will be dedicated to outbound traffic only during these periods (November 2010 and then late January through April 2011).

Outbound traffic leaving Boston through Leverett Circle will be unaffected during these periods.

Inbound traffic travelling from Cambridge to Boston will be directed to signed alternate routes. Access to the Museum of Science will not be restricted but patrons are advised to approach the Museum from Boston to avoid anticipated traffic congestion on the Cambridge side of the project.

Signed alternate routes will be in place to direct inbound traffic to Logan International Airport, I- 93, Storrow Drive, area hospitals, and points West.

## Alternate Routes



## Bike and Pedestrian Access during Construction

Full bike and pedestrian access in each direction will be maintained during construction. During Phases 1 and 3 of the drawbridge replacement, only one side of the bridge will be opened and must be shared by inbound and outbound bike and pedestrian traffic. Depending on the direction of travel, bikes and pedestrians approaching the site may be directed to cross the road at designated crossing areas. A manned and signalized crossing area will be placed at the mid-point of the roadway at the Museum of Science during these phases.

Bikes and pedestrians are advised to use caution during periods where two-directional travel over the single temporary bridge is necessary. Bikes may use the road during this period and signage and markings will be placed to advise motorists of the shared road condition.