

# Interstate 91 Viaduct Rehabilitation Project

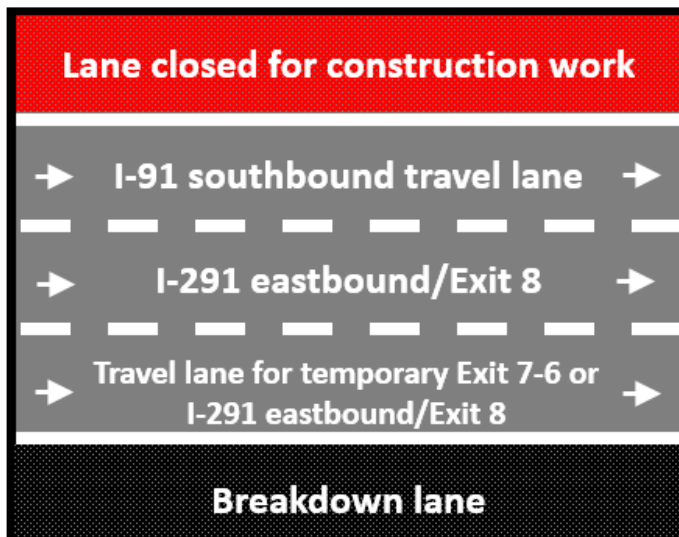


## **I-91 Viaduct Rehabilitation Project Advisory – December 2015**

### **Reminder: Take Temporary Exit 7-6 to Access Springfield**

MassDOT would like to remind drivers that the Temporary Exit 7-6 on I-91 South is now open. MassDOT encourages drivers to use the temporary exit for easier access to West Columbus Avenue and the greater Springfield area destinations previously served by the closed exit ramps, including Boland Way/Downtown, the Springfield Parking Authority I-91 Garages, the Memorial Bridge, and the Basketball Hall of Fame area. After the I-391 merge at the Chicopee Curve, keep right. The right lane on I-91 South connects traffic to Temporary Exit 7-6. The second from the right lane provides access to I-291 East/Exit 8. For more details, a diagram showing lanes on I-91 South is below:

### **I-91 southbound lanes north of Exit 7-6 and I-291 interchange/Exit 8**



*Those traveling through the area should reduce speed, follow the reduced speed limits, and use caution. MassDOT encourages drivers to avoid the area and seek alternate routes to minimize delays.*

For more information about the project, visit the website at [www.mass.gov/massdot/I91ViaductRehab](http://www.mass.gov/massdot/I91ViaductRehab). View progress photos on the project's [Flickr Album](#). To report issues or concerns, or for questions related to construction, please email [I91viaduct@state.ma.us](mailto:I91viaduct@state.ma.us) or call 617-454-1839. For media inquiries, please contact MassDOT Deputy Press Secretary Amanda Skahan at [amanda.skahan@state.ma.us](mailto:amanda.skahan@state.ma.us).

***The schedule for this major infrastructure project is weather dependent and subject to change without notice.***